



User's Manual – Alpha 4D

Oct 2020



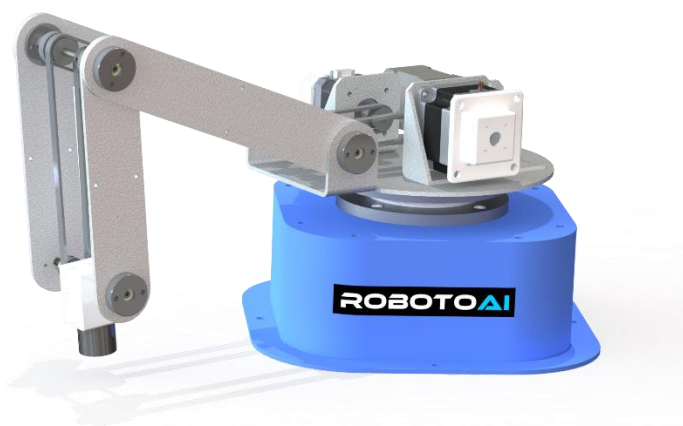
Information contained in this publication regarding device applications and the like is intended through suggestion only and may be superseded by updates. It is your responsibility to ensure that your application meets with your specifications. No representation or warranty is given and no liability is assumed by RobotoAI Technologies Incorporated with respect to the accuracy or use of such information or infringement of patents or other intellectual property rights arising from such use or otherwise. Use of RobotoAI Technologies products as critical components in life support systems is not authorized except with express written approval by RobotoAI Technologies. No licenses are conveyed, implicitly or otherwise, under any intellectual property rights.

User Manual

Robotic Arm

Alpha 4D - 4 Axis Robotic Arm

Specially made for Research and Training





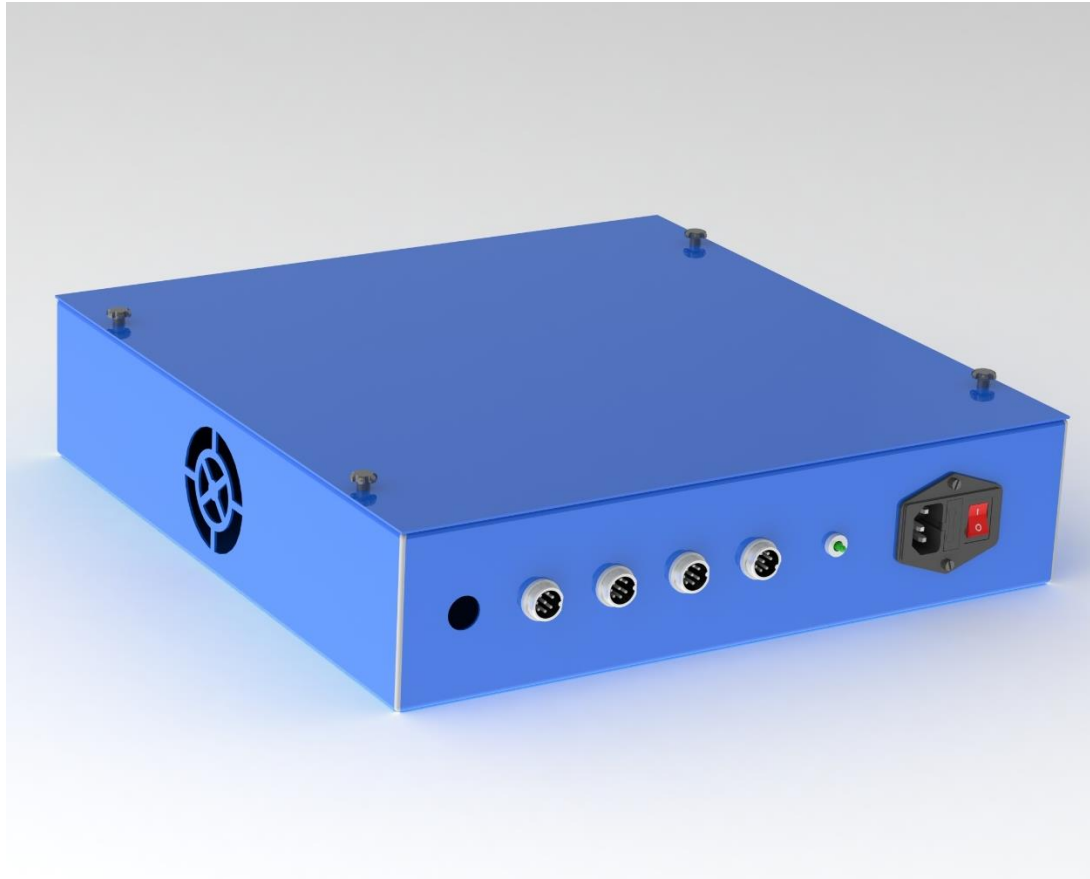
The Alpha Manipulators are one of the world's few kind of educational robots that are specially engineered for providing a best class educational experience. Alpha builds a great learning platform for students and helps in learning its control parameters through Robot Operating System (ROS). Alphas are flexible for on board installation in mobile robots and can also be indigenously installed in various flat platforms. These robots help the users in learning navigation trajectories for various applications such as machine tending, packaging, palletizing etc., We provide a wide variant in manipulators such as Alpha-D, Alpha-2D, Alpha-3D, Alpha-4D, Alpha-6D which enables easy learning and implementation that comes with different DOFs respectively. The users can make use of these robots for getting trained before starting with industrial robots and software platforms. It has been designed for R&D laboratories, higher education, training etc.,

TECHNICAL SPECIFICATIONS

Alpha 4D - 4 Axis Robotic Arm

Weight	8 Kg
Payload	200 g
Reach	300 mm
Repeatability	+/- 1 mm
Power supply	220V AC
Communication	USB
Interface/Programming	Windows/Linux (ROS)
Power consumption	120 W
Materials	Sheet metal (Steel) Base + Acrylic Links
Ports	1 USB

Control Panel



5 Connectivity ports

1. USB port
2. Motor and Encoder I
3. Motor and Encoder II
4. Motor and Encoder III
5. Motor and Encoder IV

Safety Precautions



Please do not move the joints manually during ON condition.



Keep in a cool and dry place.

Warranty



Alpha – Robotic arms are primarily designed for Educational, Research purposes. We kindly request you to follow the safety precautions. We provide 1 Year solid warranty covering under manufacturing defects only.

Prepared by RobotoAI Technologies
Coimbatore 641028,
Tamilnadu,
India.

Email Us: contactus@robotoai.com
Website: www.robotoai.com